

**The Epson Sure Colour Fabric series** represents a revolution in the textile printing industry. Designed to print on Cotton cloth garments, caps and bags and other promotional merchandise, the Epson Sure Colour F2000 is ideal for custom in-store printing and low volume commercial applications. It enables production of customised and value-added goods with high impact and good wash/wear durability.

Here are its FEATURES AT A GLANCE:

- **High Productivity** – easy platen loading and height adjustment with a mechanism that will print a t-shirt in as little as 44 seconds.
- **High Flexibility** – supports fabric up to 25mm thick, platen options support print areas up to 406x505mm and ships in a choice of two configurations for high speed colour on light fabric or white + colour on mixed light and dark fabric.
- **Low Operational Cost** – uses



minimum ink to achieve maximum colour with a choice of cartridge sizes to suit different production levels and cost-per-print requirements.

• **Compact and Convenient** – features a small footprint with front-loaded consumables, a large colour LCD control panel with in-built help, and will accept print jobs from either a PC or USB storage device.

• **Easy to Install & Operate** – Quick to set-up, features automatic optical height sensing, automatic self-cleaning, supplied with easy to use Epson Garment Creator software, and has delivery co-ordinated by Epson Australia.

#### Additional software compatibility Info:

• **Epson PrecisionCore™ (TFP) Print Head** – supports resolutions up to 1440x1440dpi with precise dot placement and volumetric control to ensure superior image quality / consistency and outstanding operational durability.

• **Epson UltraChrome™ DG ink** – provides a superior colour gamut with high brightness, excellent elasticity, wash/UV durability & Oeko-Tex conformity.

For further information visit [www.tajimaaustralia.com.au](http://www.tajimaaustralia.com.au) or call 1300 283 460.

## The TWMX - C Series. Now with the Wide X Axis Extension Unit.



100% Designed and Made in Japan

#### Contact us:

Phone: 1300 283 460

Fax: (03) 9484 9003

#### Head Office:

74 Raglan St, Preston - VIC 3072

#### General Enquiries:

[sales@tajimaaustralia.com.au](mailto:sales@tajimaaustralia.com.au)

#### Machine Enquiries:

[sales1@tajimaaustralia.com.au](mailto:sales1@tajimaaustralia.com.au)

#### Orders:

[orders@tajimaaustralia.com.au](mailto:orders@tajimaaustralia.com.au)

#### Service & Breakdown:

[service@tajimaaustralia.com.au](mailto:service@tajimaaustralia.com.au)

## Summer is here!

**Ever wondered** how you can embroider on an unstructured hat (like the featured sun/Bucket hat images)? The answer is: using the right frame! The Semi Wide cap frame will provide support to the whole area that you are planning on embroidering, it fits your standard cap drive. It is in our catalogue and on our website under Accessories - Tajima Frames - Part No. 9347100300A11.



## How do I know when it's time to change my needle?

A common sign that the needle is worn out is that it will start breaking or fraying the thread. It's the eye of a needle that wears out, not the tip. Generally, friction causes the thread to cut a groove in the eye, resulting in thread fraying and breaking. Other reasons can be issues like the needle being bent, birds nesting, or simply the wrong selection of needle in the first place.



GROZ-BECKERT®

#### How often to replace a needle?

The more a needle is used, the faster it wears out. The most common needles - used for black, white and red threads, for example - will need to be changed every week or two, with an average 40-hour workweek. But a needle that is used with, say a pink thread, once a year for a small 5,000 stitch design, will never require a needle replacement. The next most commonly asked question about needle selection is:

#### Am I using the right embroidery needle for my job?

Here are some suggestions for selecting the right needle for each job:

##### - Standard for Woven Fabric:

DBXK5 #75/11 (RG) = Sharp Point.

- **For knitted Fabric:** DBXK5 #75/11 (SES) = Light Ball point.

- **For Metallic threads:** DBXK5Z1 NY #75/11 (Z1) = Size may vary by thread thickness when using Metallic thread. Check Manufacturers suggestion.

- **For Caps and 3D Foam:** DBXK22 NY # (Z2) = This needle has a shorter shank which helps in sewing with extra thick fabrics.

- **Home / Non commercial embroidery needle with a flat side:** HAX1EB or (130/705 H FG)(SES) = Light Ball Point #75/11.

Only one word can describe the TWMX-C Embroidery Machine... IT'S JUMBO! This outstanding embroidery machine has been designed from the ground up to provide large field, single hooping embroidery with the legendary Tajima quality known around the world. This machine has been designed to provide a solution for those jobs that a standard machine can't handle when it comes to larger jobs, boasting an extra large sewing area of 550mm x 1200mm! It is ideal for quilting, horse rugs and other products with large embroidery areas.

This machine features:

- 1,200 stitches per minute speed
- Bar code ready (like all the current models in the Tajima range with Pulse software)

• A huge sewing area, thanks to the **550 x 1200mm border frame!**

• Color LCD Control Panel for a simple, easy to operate interface

• Thread breakage detecting system

• Memory capacity: 2,000,000 stitches or up to 200 designs

• Design Editing: modify, insert or delete your embroidery design stitch by stitch

• Networking system to transfer designs from your computer to the machine

• Automatic or Manual Offset: facilitates applique fabric placement and frame changing

• Automatic Upper / Under Tread Trimming Device

• Scale Up / Down, Rotate: scale your

designs down to 50% or up to 200% and rotate in 1-degree increments

• Automatic Repeat: a design can be automatically repeated up to 99 times both vertically and horizontally

• Satin Stitch Reduction and Expansion: automatically remove small stitches to prevent thread breakage effectively

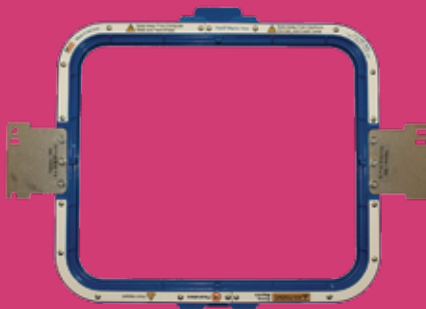
And much more. Contact us now and we will be happy to talk about all the features of this great machine.





## No Show Backing

No Show is a low profile, soft and sheer Cut Away backing. Made of 100% embossed polyester, it provides low visibility, and has been designed specifically for performance wear and moisture wicked fabrics. A single piece will work for designs of up to 8,000 stitches. For larger designs you may want to use two pieces. No Show may also be used for light weight items where a normal heavy Cut away would be visible through the fabric and it will provide a nicely finished embroidery job!



## Mighty Hoops

Mighty hoops are new magnetic hoops that make hooping very easy. There is no need to adjust the outer ring as the hoop holds the garment with magnetic force and automatically adjusts for different thicknesses. It also reduces the stress on your wrists and hands as it wants to pull itself together, even for thick garments. Hoop burn is greatly reduced. Unlike clamps, Mighty Hoops are designed to work with the HoopMaster for easy accurate hooping. Mighty hoops come in 7 different sizes.



## Glow in the dark thread

The Madeira thread LUNA makes embroideries glow in the dark, as it stores the light, emitting it in the dark. The luminous power of the thread depends on the intensity of the light. A new technology makes LUNA glow in the dark time after time and much longer than other glow in the dark threads. Thanks to its composition, LUNA is soft to the skin and it can be used as a 40 weight thread. LUNA is also suitable for denim wash!



**Efficiency is attainable** for even the smallest of embroidery businesses with Pulse ID. This automation and personalization software standardizes critical embroidery production processes and will help improve your businesses overall performance.

# Optimize and automate your production Process

- **DIRECT CONNECTION TO YOUR MACHINE** - No more searching for usb's and job sheets, with Pulse ID all of the information is ready to be used at your fingertips.
- **SAVE TIME** - With Pulse ID the operator doesn't have to repeatedly input information or reconfigure machine settings every time they change jobs.
- **SPEED UP YOUR PERSONALISATION PROCESS** - Adding names or monograms is now made easier by establishing a set of rules that determines the size, colour and font needed for a specific order. Both these functions eliminates operator error.
- **WEB SITE USE AND INTEGRATION ADVANTAGES** - In addition, the program includes a toolkit that enables software and application developers to add

embroidery functionality to a website. It allows the user to produce, manipulate and display personalized embroidery files on a website in the form of 3-D renderings. The web modules allow customers to create their own embroidery designs online. Visitors can create a design in minutes and pay for it with a variety of options.

- **DETAILED REPORTING** - Pulse ID offers detailed, scalable reporting. Regardless of the number of machines, managers can analyse data such as stitches per minute, re-sews, run efficiency, thread breaks and turnaround time to ensure maximum production is being achieved.

For further information visit [www.tajimaaustralia.com.au](http://www.tajimaaustralia.com.au). Or contact us on **1300 283 460**.

## Embroidery i<sup>2</sup> for CorelDRAW® or Adobe Illustrator

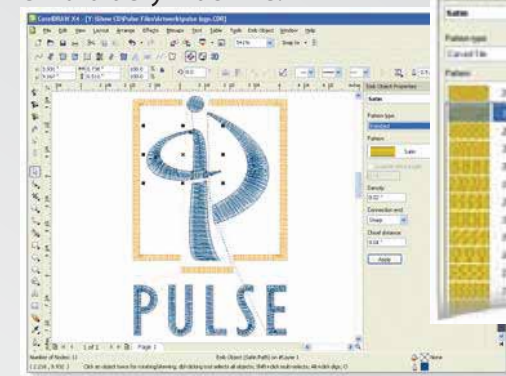
**Embroidery i<sup>2</sup> for Corel Draw® and Adobe Illustrator is a plug in** that creates embroidery inside these graphic programs. No need for a separate embroidery software application, no need to learn any new programs or interfaces.

Create logos, artwork and designs within Corel Draw® or Illustrator, and then you are ready to convert to embroidery. You can simply assign a stitch effect and adjust any embroidery parameters such as density, pull compensation, and the design is ready for the embroidery machine.

**Embroidery i<sup>2</sup>** is not auto digitizing, it is a professional embroidery design creation software that is perfect for embroiderers, screen and digital printers, promotional product companies and those who want to create amazing embroidery.

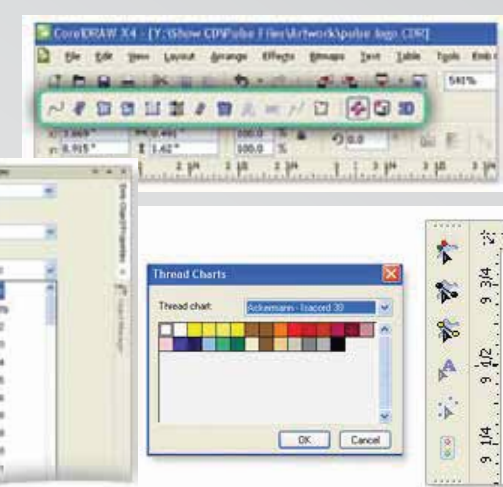
You no longer have to struggle with independent software packages or be bothered by vector compatibility issues. You will always be working within the CorelDRAW® or Illustrator environment that you know and love! **Embroidery i<sup>2</sup>** offers a short learning curve, so you will be ready to embroider sooner.

- **Convert any vector file into embroidery quickly:** just select the stitch type and effect you want, adjust parameters and send the file to the embroidery machine!



- **Add lettering to a design:** you can use available embroidery designs and add lettering, by converting True Type® Fonts to satin stitches, or use pre-digitized fonts to personalize your design. Or you can create your own design and apply any stitch you want.

- **Edit embroidery settings:** some designs require adjustments before it is sent to the machine. You can adjust stitch density and length, pull compensation, add underlay or edit a stubborn angle line. You can also choose a garment recipe to adjust the embroidery to a fabric type.



- **Convert a bitmap or jpg file into embroidery:** just use the LiveTrace tool in CorelDRAW® or Illustrator to get a vector file from your artwork, and then apply stitches as normal. Or use the Autodigitize feature to automatically assign stitches to your design.

- **Create Monograms:** just choose one of the monogram fonts included in the software.

- **Select your thread from the Thread Charts:** most of the popular thread charts are included in the software for an easy thread selection. And much more! Visit our website or call us on **1300 283 460** for more info on this fantastic software.

## Embroider fine details and small lettering.



**MADEIRA's fine viscose thread CLASSIC No.60 and POLYNEON No.60** provide the opportunity to create the best small lettering and fine detailed embroidery.

We have listed a few pointers on how to do it!

**1.** The design should be digitised specifically for a 60's thickness thread, whether for a part or whole of the design. Always advise your digitiser you plan to sew with a 60's thickness thread!

**2.** The thread tension has to be adapted to the 60's thread thickness. If you are embroidering lots of small lettering

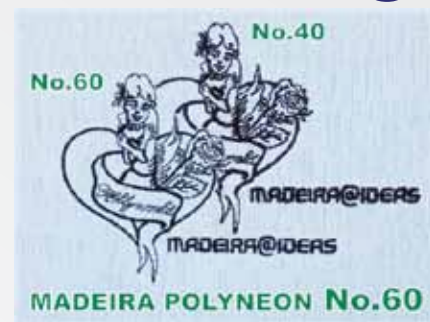


and fine details, we recommend to change the needle size.

**3.** The correct needle for the 60's thickness embroidery thread is a size 65/9.

**4.** If you are embroidering Pique, and performance fabrics and similar, it's a good idea to sew a stitch base in a tone on tone thread to improve the quality of the fine designs. We also suggest using a **NO SHOW backing** that is designed to improve the stitch support and won't add heaviness to the back of the design.

**5.** Generally the minimum size for lettering using standard 40 thickness



thread is 5-6mm. With 60's thickness and correct tensioning of your machine, this can be reduced to 3mm, without losing design clarity.

**6.** The colours available in the 60's thickness are marked with blue dots on the classic colour card.

Classic 60's is available in 85 colours and comes as 1,500mt cops. Art #915-colour.

