

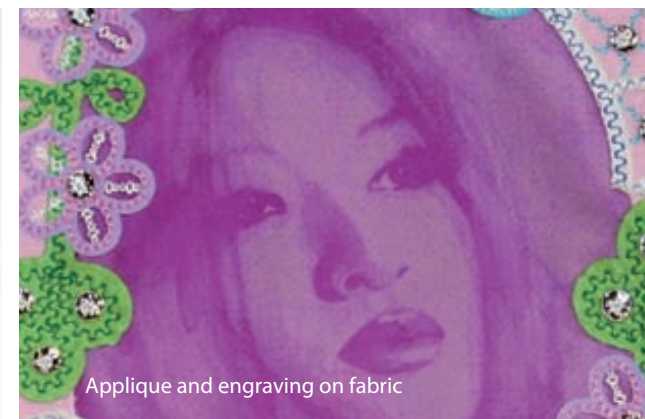
FLASH

PRECISION LASER CUTTER

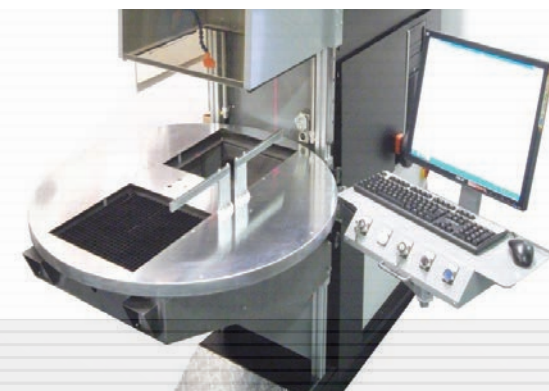
The Flash 300 is a Co2 laser machine for cutting and engraving a wide range of materials (leather, rubber, synthetics, plastics, wood). Its advanced technology allows to work a high quality and precision, with extraordinary execution speed.

TECHNICAL FEATURES

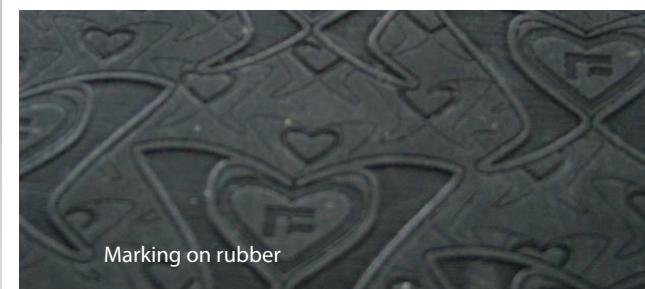
Laser tube	Co2 sealed
Nominal	60W - 80W - 100W
Real output	75W - 100W - 120W
Galvo head speed	9000 mm/sec
Working area	300 mm
Max height of workpiece	250 mm
Power consumption (Max)	220 V - 4 kW



Applique and engraving on fabric



The turning table, with two work stations, allows the loading/unloading of the pieces in hidden time.



Marking on rubber



FLASH

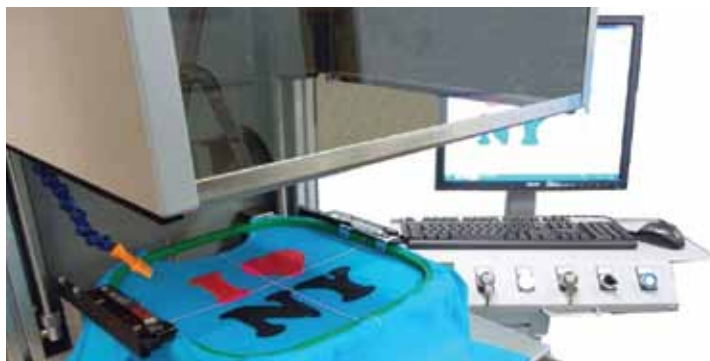
PRECISION LASER CUTTER

The Flash 300 is a Co2 laser machine for cutting and engraving a wide range of materials (leather, rubber, synthetics, plastics, wood). Its advanced technology allows to work a high quality and precision, with extraordinary execution speed.

BENEFITS:

CO2 sealed laser source
Head with galvanometric mirrors
Focusing lens
Selectable material thickness
Chiller for water cooling
Specific CAD and CAM software

Automatic exhaust hood
Adjustable suction hoses
Adjustable air jet
Laser pointer for centering
Working table with aspirated honeycomb
Scrap collection box



The frame support with dedicated software combines laser machining with embroidery.



Applique on fabric



Marking on rubber



Engraving on finished shoes



Engraving pre-painted and anodized



Engraving on leather



Contact us today for an obligation free quote on any of our other stock machines.

All machines are available for immediate delivery from our Melbourne warehouse.

Or drop in for a demo at our Melbourne or Brisbane offices.

Email: sales1@tajimaaustralia.com.au

www.tajimaaustralia.com.au